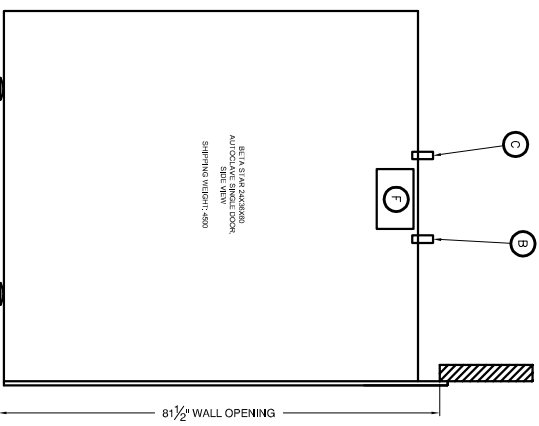
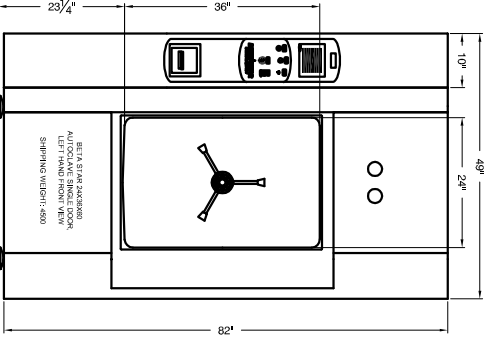
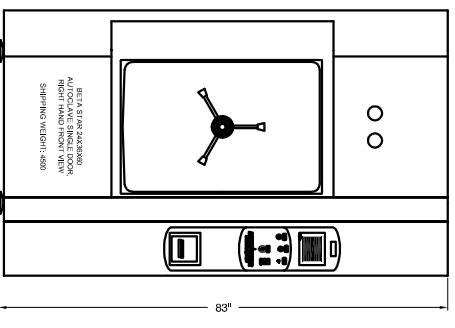
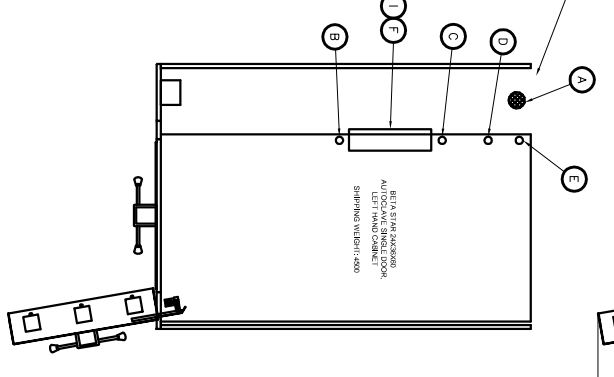
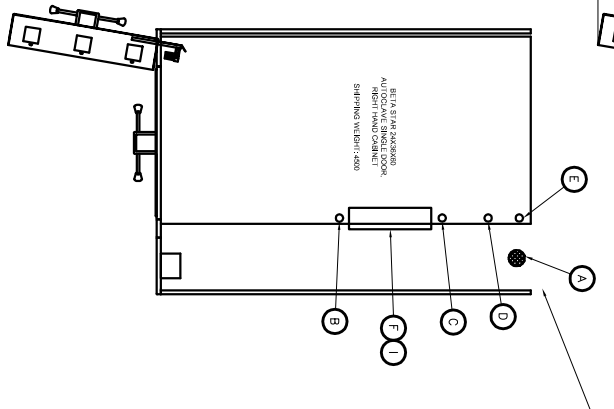
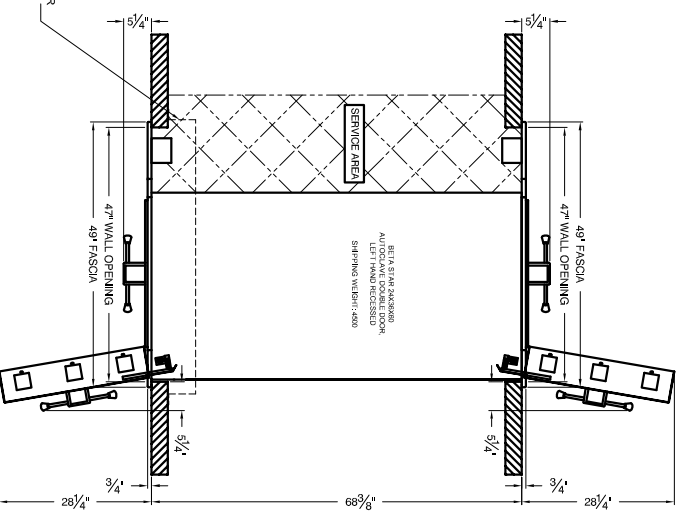
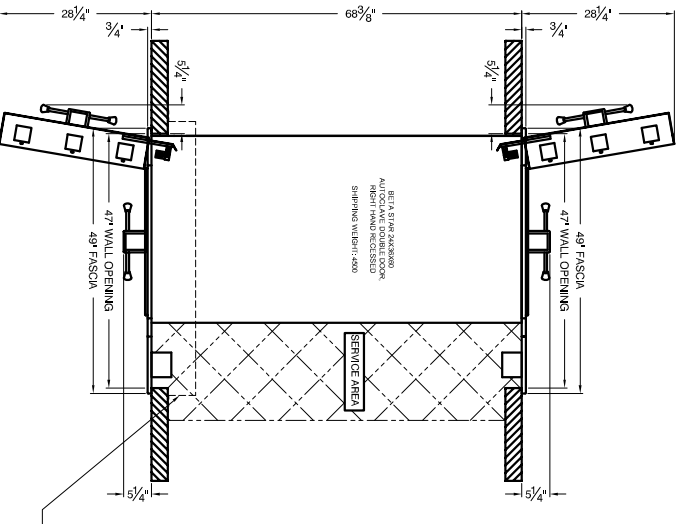
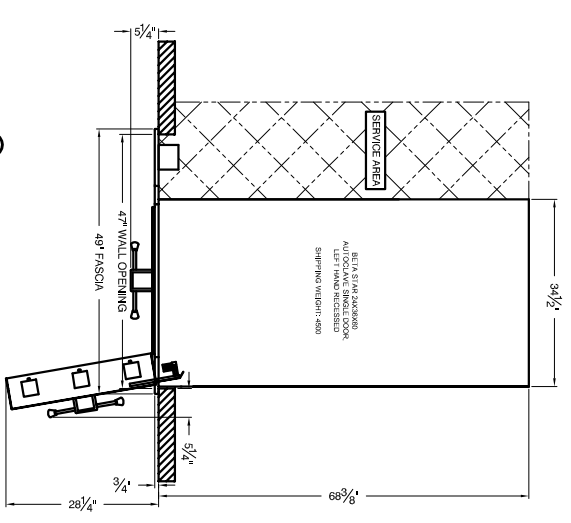
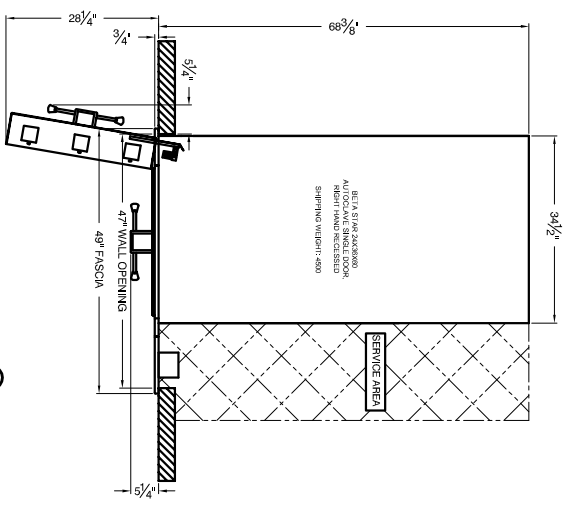


24X36X60 UTILITY REQUIREMENTS AND SPECIFICATIONS

STEAM (LB/HR)		PULSE VAC. WATER (GPM)		HI VAC. WATER (GMP)		COMPRESSED AIR (SCFM)		DRAIN SIZE (INCHES)		STERILIZER CONTROL		VAC. SYSTEM								
LINE SIZE	PEAK	AVG.	LINE SIZE	PEAK	AVG.	LINE SIZE	PEAK	AVG.	VOLTAGE	PHASE	FREQUENCY	AMP DRAW	DISCON. SIZE	DISCON. FUSE SIZE	AMP DRAW	DISCON. SIZE	DISCON. FUSE SIZE	AMP DRAW	DISCON. SIZE	DISCON. FUSE SIZE
1	275	210	3/4	14	8	1/2	2	1	110	SINGLE	60Hz	5	EXTERNAL WALL BOX WITH WALL SWITCH	15 (AMP)	7.8	30	10	3.4	30	5
E			C				B		A				F							



THIS DOCUMENT CONTAINS INFORMATION DEEMED CONFIDENTIAL AND PROPRIETARY BY R-V INDUSTRIES, INC. IT IS TO BE REPRODUCED IN WHOLE OR IN PART WITHOUT THE EXPRESS WRITTEN PERMISSION OF R-V INDUSTRIES, INC. CENTRAL ENGINEERING & UTILITIES SERVICES. FURTHER NO USE OF THIS DOCUMENT OR THE INFORMATION CONTAINED HEREON MAY BE MADE WITHOUT FIRST SECURING THE PRIOR WRITTEN APPROVAL OF R-V INDUSTRIES, INC. CENTRAL ENGINEERING & UTILITIES SERVICES.

MACHINE TOLERANCES UNLESS OTHERWISE SPECIFIED

X	±1/32
X.X	±.020
X.XX	±.010
X.XXX	±.005

ANGLES ±.30 MIN
FRACTIONAL DIM ±.1/32

FABRICATION TOLERANCES
0" TO 36" ±.1/16"
36" TO 120" ±.1/8"
> 120" ±.3/16"

BREAK ALL SHARP EDGES

REV	DATE	DRAWN BY	REVISION	CHK	APP
1	7/6/07	ZAS	CHANGED DRAWING PER RED MARK UPS	DG	
0	4/23/07	ZAS	INITIAL RELEASE OF BLOCKS		

DESCRIPTION: 24X36X60 STERILIZER ASSEMBLY BLOCKS

CUSTOMER: _____
CUST. REF. DWG. _____
CUST. ORD. NO. _____
ITEM NO. _____

SCALE: NONE DATE: 4/23/07 NO. DWG. D-86-19118

R-V Industries Inc. 584 POPLAR RD. HONEY BROOK, PA 19344 610-273-2457 FAX 610-273-2438

REV. 1