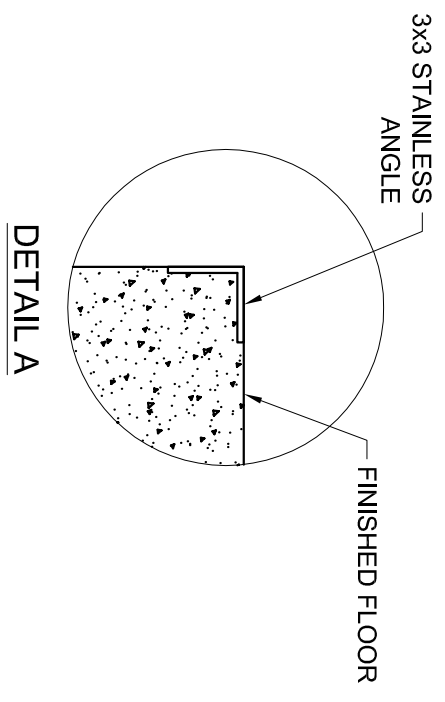
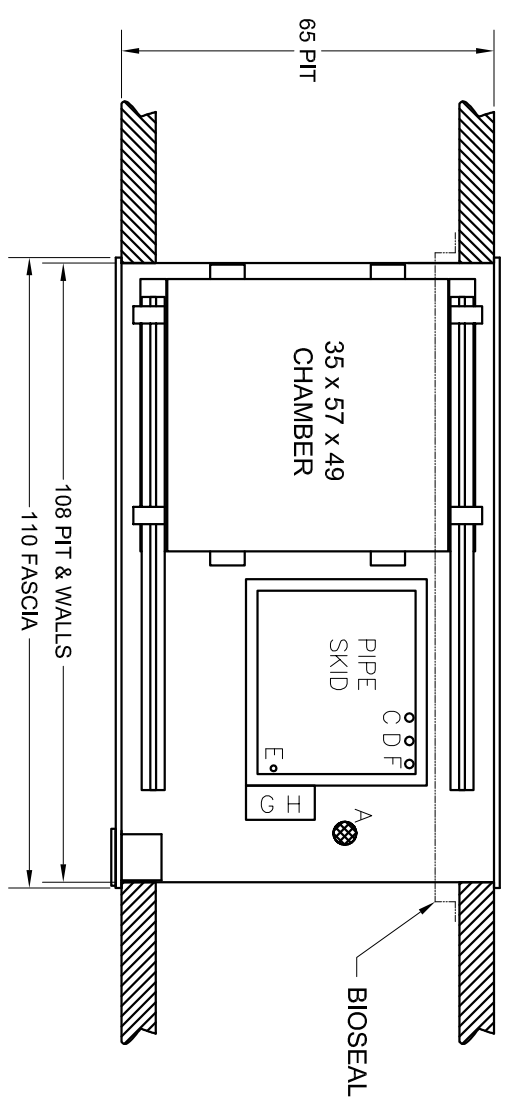


UTILITY REQUIREMENTS AND SPECIFICATIONS

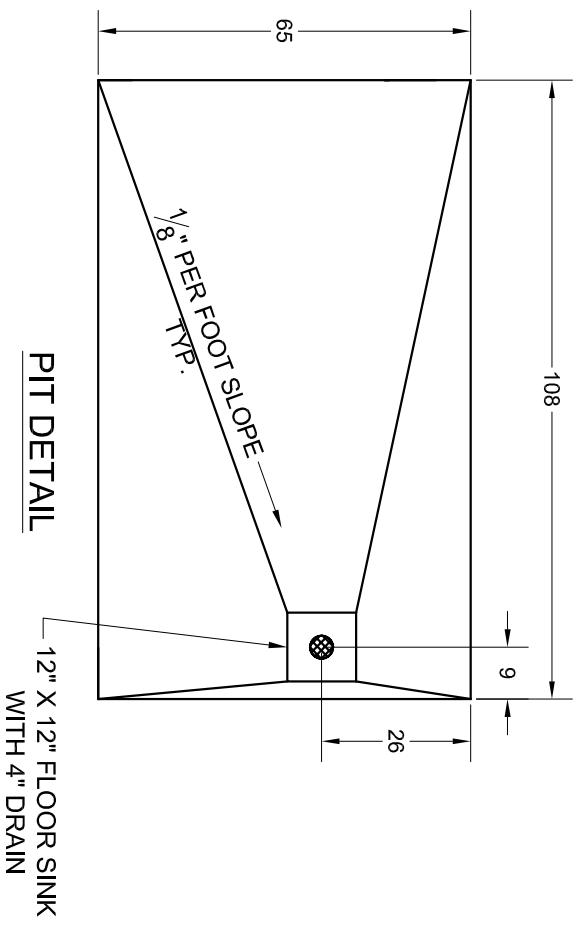
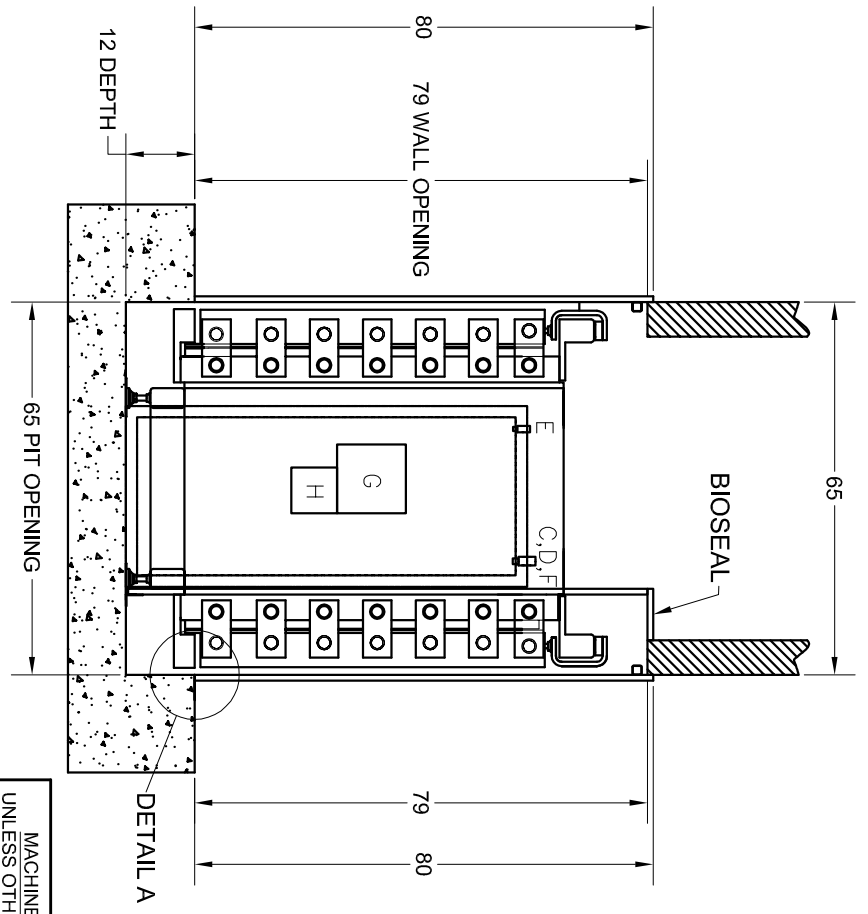
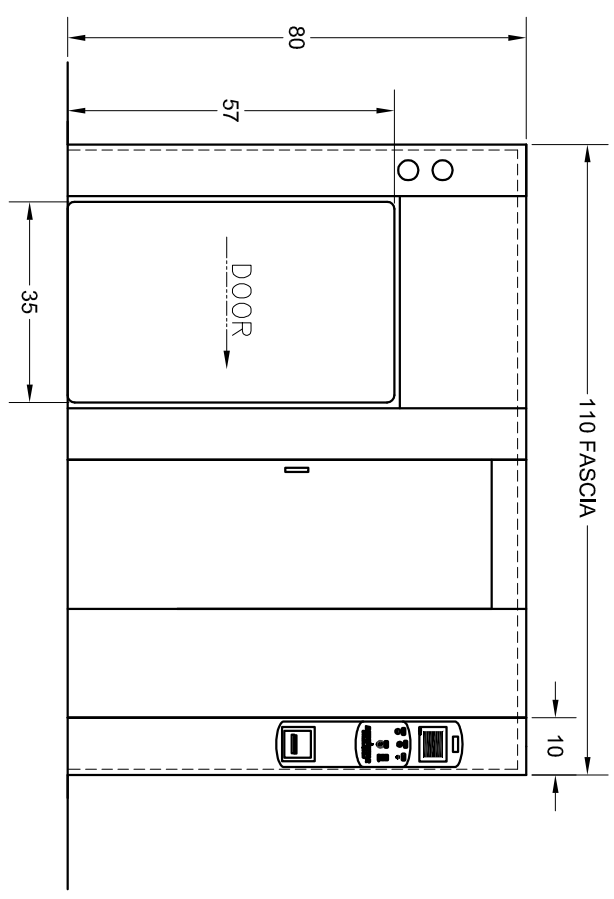
BETA STAR MODEL	STEAM (LB/HR) 60-80 PSIG	HIGH VACCUUM WATER (GMP) 20-50 PSIG	COMPRESSED AIR (SCFM) 80-100 PSIG	DRAIN SIZE (INCHES) 4	VOLTAGE 110	PHASE SINGLE	FREQUENCY 60-Hz	AMP DRAW 5	DISCON. SIZE EXT. WALL BOX WITH SWITCH	DISCON. FUSE SIZE 15 (AMP)	AMP DRAW 17.5	DISCON. SIZE 30	DISCON. FUSE SIZE 20	AMP DRAW 7.6	DISCON. SIZE 30	FUSE SIZE 10

STERILIZER CONTROL

VAC. SYSTEM



- NOTES:
- 1) UTILITIES SHOWN REQUIRE TIGHT SHUT OFF VALVE ACCESSABLE AT MACHINE FOR SERVICE.
 - 2) FOR LONG WATER OR STEAM RUNS INCREASE ONE PIPE SIZE TO INSURE PROPER GALLONS/HR & LB/HR FOR OPTIMUM EQUIPMENT PERFORMANCE.
 - 3) 18" CLEARANCES ON SIDES ARE MINIMAL FOR INSTALLING & SERVICING.
 - 4) ALL UTILITIES MUST BE WITHIN 5 LINEAR FEET OF CONNECTION POINT OF STERILIZER.
 - 5) STEAM TO BE 97-100% VAPOR QUALITY AND BUCKET TRAP TO BE INSTALLED AT UNIT BY CUSTOMER.
 - 6) ENSURE A 2" MINIMUM AIR GAP BETWEEN DISCHARGE AND FLOOR DRAIN.
 - 7) EACH LINE ITEM ABOVE IS REQUIRED AS SEPARATE CIRCUITS.
 - 8) R/H DOOR TRAVEL SHOWN. L/H DOOR TRAVEL MIRROR IMAGE.



MACHINE TOLERANCES UNLESS OTHERWISE SPECIFIED

X.	±1/32
X.X	±.020
X.XX	±.010
X.XXX	±.005
FRACTIONAL DIM ± 1/32	
ANGLES ± 30 MIN	

FABRICATION TOLERANCES

0" TO 36"	±1/16"
36" TO 120"	±1/8"
> 120"	±3/16"

BREAK ALL SHARP EDGES

1	8/30/07	ZAS	REVISED PER RED MARK UPS	DG
0	5/1/07	ZAS	INITIAL RELEASE	
REV	DATE	DRAWN BY	REVISION	CHK APP

DESCRIPTION: 35 X 57 X 49

CUSTOMER: _____
 CUST. ORD. NO. _____
 CUST. REF. DWG. _____
 ITEM NO. _____



584 POPLAR RD.
 HONEY BROOK, PA 19344
 610-273-2457
 FAX 610-273-2438

SCALE: NONE DATE: 5/9/07 DWG. NO. B-88-19237 Sheet 1/1

THIS DOCUMENT CONTAINS INFORMATION DEEMED CONFIDENTIAL AND PROPRIETARY TO R-V INDUSTRIES, INC. CENTRAL ENGINEERING & UTILITIES SERVICES AND MAY NOT BE REPRODUCED IN WHOLE OR IN PART WITHOUT THE EXPRESS WRITTEN PERMISSION OF R-V INDUSTRIES, INC. CENTRAL ENGINEERING & UTILITIES SERVICES. FURTHER NO USE OF THIS DOCUMENT OR THE INFORMATION CONTAINED HEREON MAY BE MADE WITHOUT FIRST SECURING THE PRIOR WRITTEN APPROVAL OF R-V INDUSTRIES, INC. CENTRAL ENGINEERING & UTILITIES SERVICES.