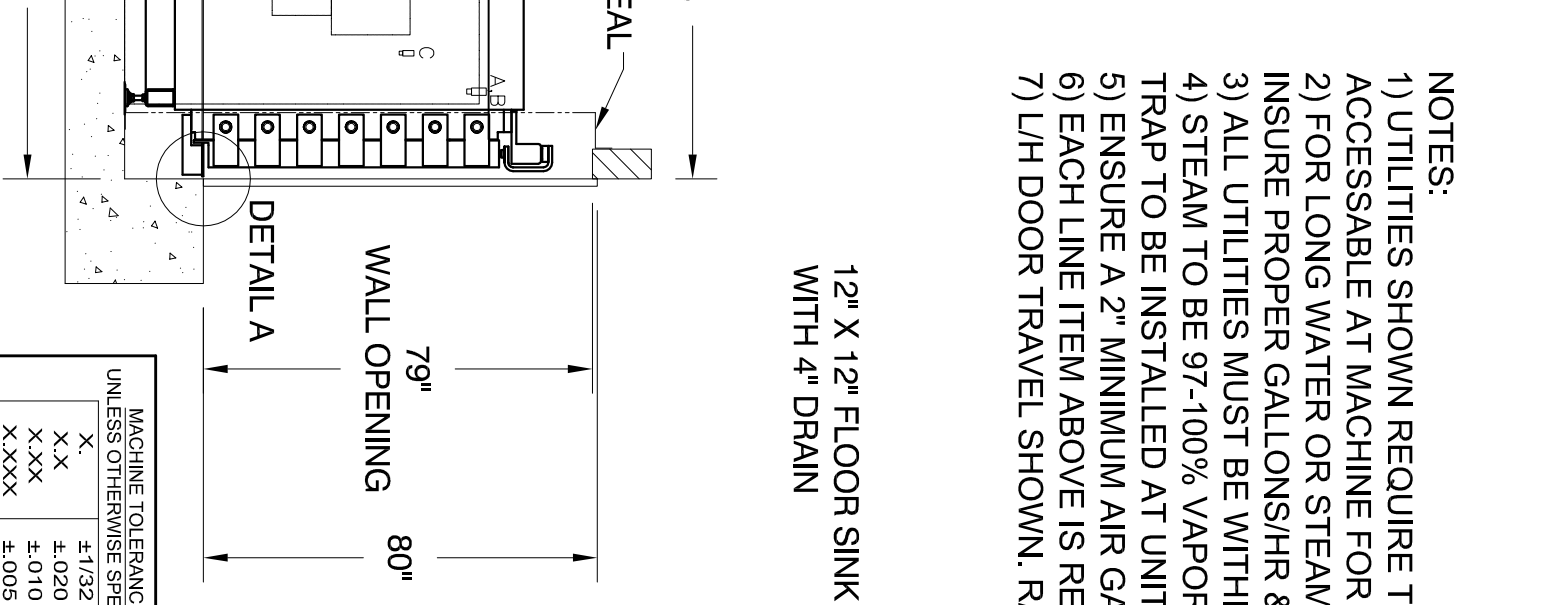
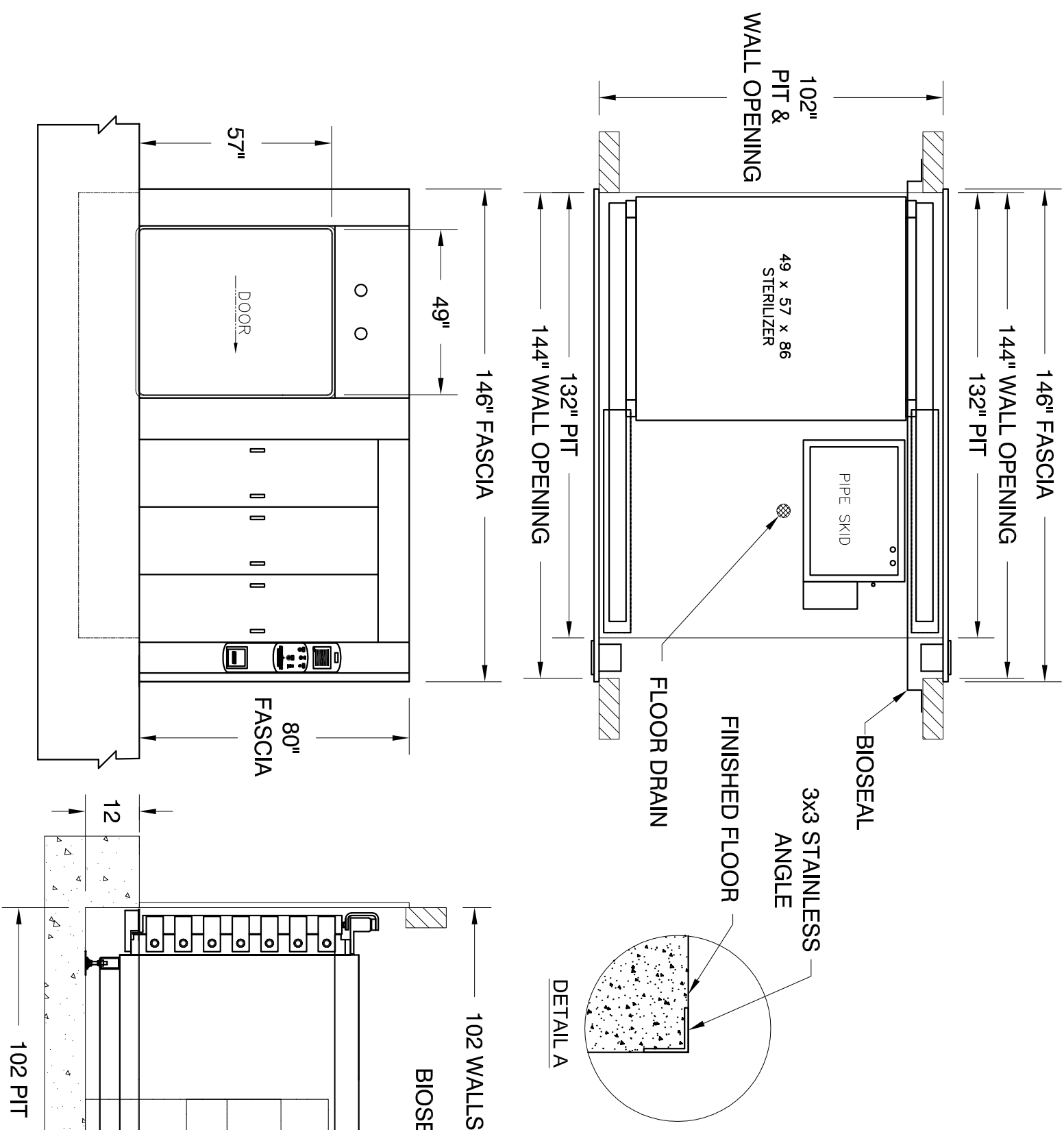
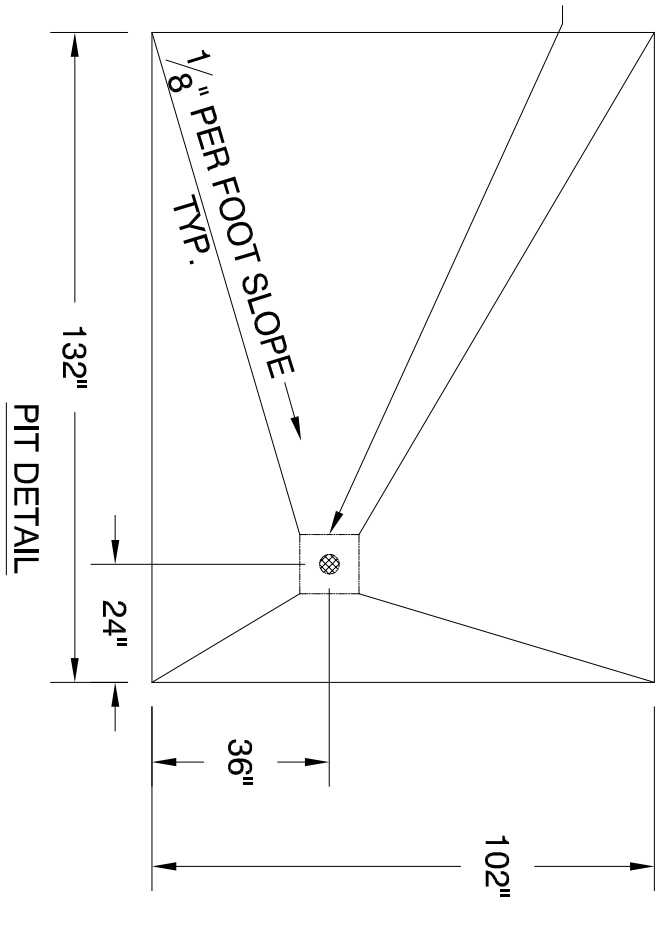


UTILITY REQUIREMENTS AND SPECIFICATIONS

BETA STAR MODEL	STEAM (LB/HR) 60-80 PSIG	HIGH VACCUUM WATER (GMP) 20-50 PSIG	COMPRESSED AIR (SCFM) 80-100 PSIG	DRAIN SIZE (INCHES)	STERILIZER CONTROL	VAC. SYSTEM
49 X 57 X 86	PEAK 1225 AVG. 950	LINE SIZE 1/2 PEAK 8 AVG. 6	LINE SIZE 1/2 PEAK 3 AVG. 2	4"	VOLTAGE 110 PHASE SINGLE FREQUENCY 60Hz AMP DRAW 5 EXT. WALL BOX WITH SWITCH	DISCON. SIZE 15 (AMP) AMP DRAW 32.2 DISCON. SIZE 60 AMP DRAW 60 DISCON. SIZE 50 AMP DRAW 14 DISCON. SIZE 30 AMP DRAW 20
						208V/3Ph/60Hz 480V/3Ph/60Hz



- NOTES:
- 1) UTILITIES SHOWN REQUIRE TIGHT SHUT OFF VALVE ACCESSABLE AT MACHINE FOR SERVICE.
 - 2) FOR LONG WATER OR STEAM RUNS INCREASE ONE PIPE SIZE TO INSURE PROPER GALLONS/HR & LB/HR FOR OPTIMUM EQUIPMENT PERFORMANCE.
 - 3) ALL UTILITIES MUST BE WITHIN 5 LINEAR FEET OF CONNECTION POINT OF STERILIZER.
 - 4) STEAM TO BE 97-100% VAPOR QUALITY AND BUCKET TRAP TO BE INSTALLED AT UNIT BY CUSTOMER.
 - 5) ENSURE A 2" MINIMUM AIR GAP BETWEEN DISCHARGE AND FLOOR DRAIN.
 - 6) EACH LINE ITEM ABOVE IS REQUIRED AS SEPARATE CIRCUITS.
 - 7) L/H DOOR TRAVEL SHOWN. R/H DOOR TRAVEL MIRROR IMAGE.



0	10/3/07	ZAS	INITIAL RELEASE		
REV	DATE	DRAWN BY	REVISION	CHK	APP
DESCRIPTION: 49 X 57 X 86					
CUSTOMER:					
CUST. ORD. NO.			ITEM NO.		
CUST. REF. DWG.					

MACHINE TOLERANCES UNLESS OTHERWISE SPECIFIED

X.	±1/32
X.X	±.020
X.XX	±.010
X.XXX	±.005

FRACTIONAL DIM ± 1/32
ANGLES ± 30 MIN

FABRICATION TOLERANCES

0" TO 36"	±1/16"
36" TO 120"	±1/8"
> 120"	±3/16"

BREAK ALL SHARP EDGES

Finish Weight: _____

SCALE: NONE DATE: 10/3/07

DWG. NO. **B-88-20051**

Sheet 1/1

R-V Industries Inc.

584 POPLAR RD.
HONEY BROOK, PA 19344
610-273-2457
FAX 610-273-2438

REV. 0

THIS DOCUMENT CONTAINS INFORMATION DEEMED CONFIDENTIAL AND PROPRIETARY TO R-V INDUSTRIES, INC. CENTRAL ENGINEERING & UTILITIES SERVICES AND MAY NOT BE REPRODUCED IN WHOLE OR IN PART WITHOUT THE EXPRESS WRITTEN PERMISSION OF R-V INDUSTRIES, INC. CENTRAL ENGINEERING & UTILITIES SERVICES. FURTHER NO USE OF THIS DOCUMENT OR THE INFORMATION CONTAINED HEREON MAY BE MADE WITHOUT FIRST SECURING THE PRIOR WRITTEN APPROVAL OF R-V INDUSTRIES, INC. CENTRAL ENGINEERING & UTILITIES SERVICES.