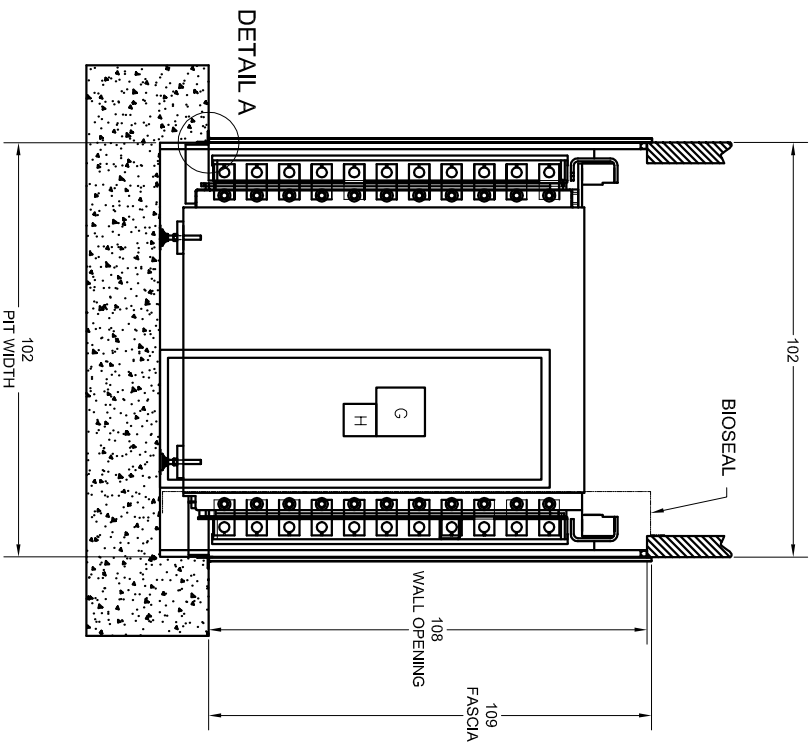
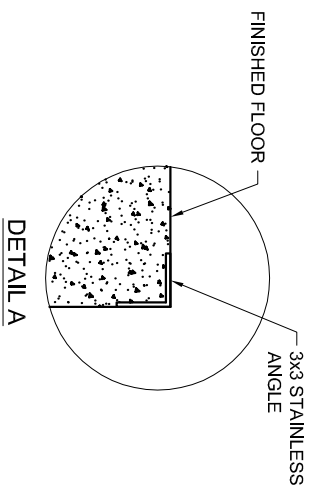
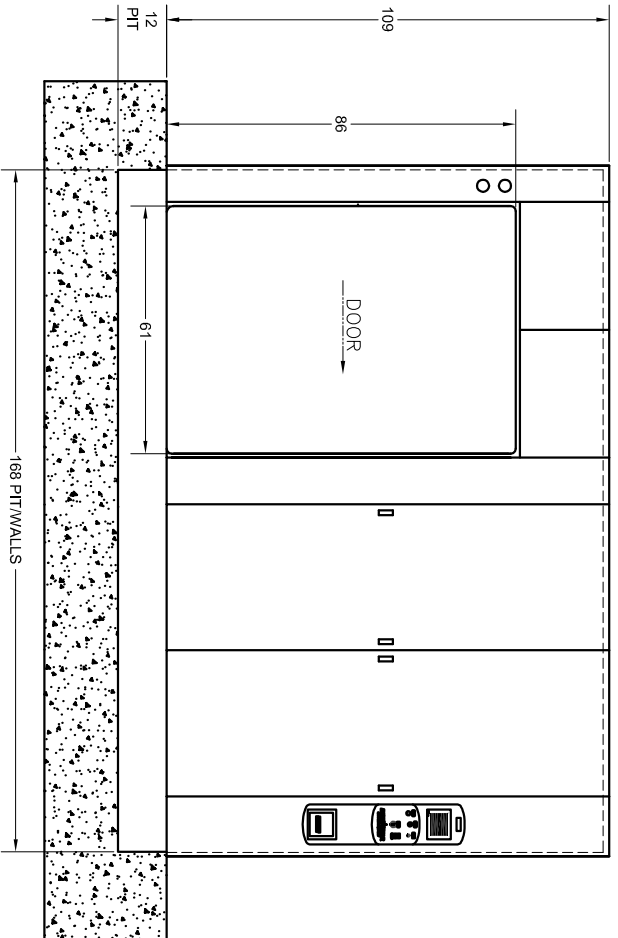
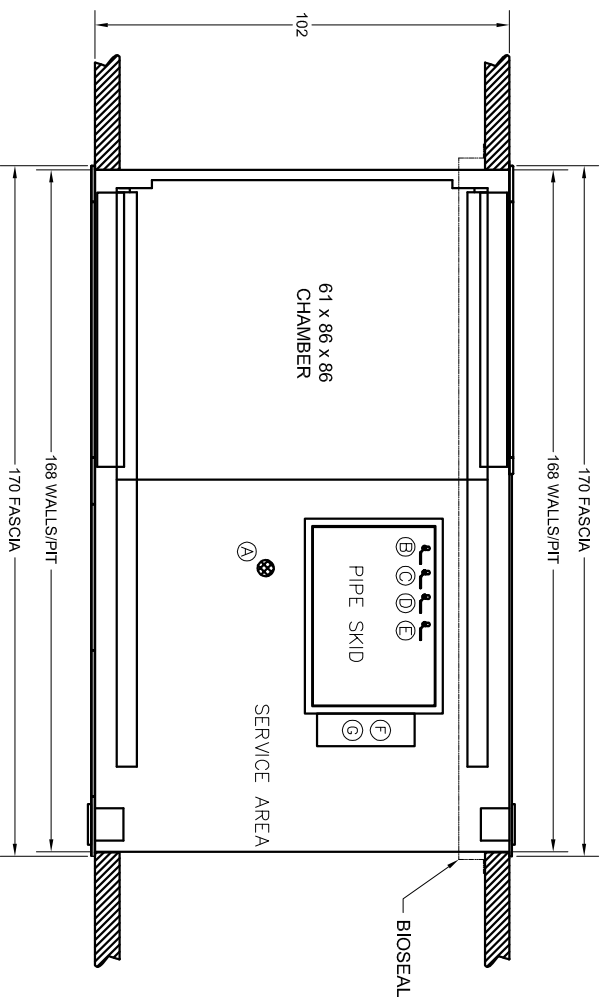
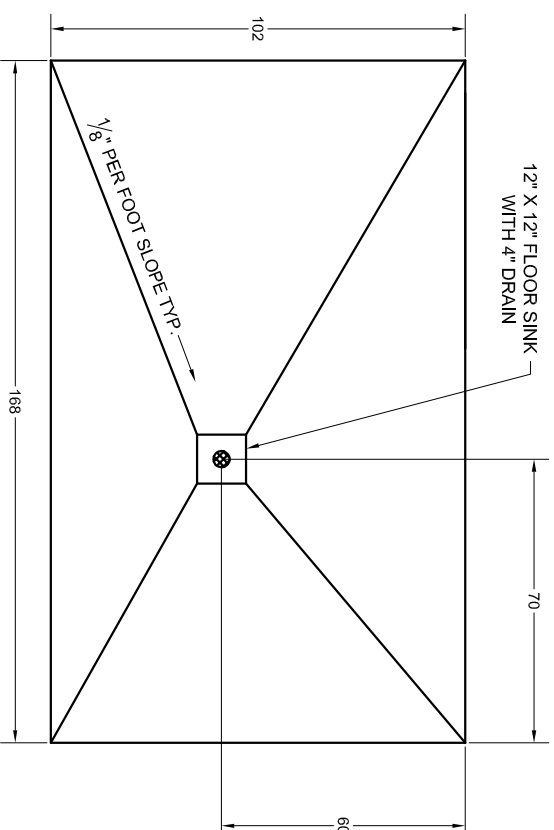


UTILITY REQUIREMENTS AND SPECIFICATIONS

BETA STAR MODEL	STEAM (LB/HR) 60-80 PSIG	HIGH VACUUM WATER (GMP) 20-50 PSIG	COMPRESSED AIR (SCFM) 80-100 PSIG	DRAIN SIZE (INCHES)	VOLTAGE	PHASE	FREQUENCY	AMP DRAW	EXT. WALL BOX WITH SWITCH	DISCON. SIZE	DISCON. FUSE SIZE	AMP DRAW	DISCON. SIZE	DISCON. FUSE SIZE	AMP DRAW	DISCON. SIZE	DISCON. FUSE SIZE	VAC. SYSTEM			
61 X 86 X 86	LINE SIZE 2	PEAK 1750	AVG. 1425	LINE SIZE 1/2	PEAK 8	AVG. 6	LINE SIZE 1/2	PEAK 3	AVG. 2	4	110	SINGLE	60Hz	5	15 (AMP)	32.2	60	50	14	30	20
																		208V/3Ph/60Hz			480V/3Ph/60Hz



- NOTES:
- 1) UTILITIES SHOWN REQUIRE TIGHT SHUT OFF VALVE ACCESSABLE AT MACHINE FOR SERVICE.
 - 2) FOR LONG WATER OR STEAM RUNS INCREASE ONE PIPE SIZE TO INSURE PROPER GALLONS/HR & LB/HR FOR OPTIMUM EQUIPMENT PERFORMANCE.
 - 3) 18" CLEARANCES ON SIDES ARE MINIMAL FOR INSTALLING & SERVICING.
 - 4) ALL UTILITIES MUST BE WITHIN 5 LINEAR FEET OF CONNECTION POINT OF STERILIZER.
 - 5) STEAM TO BE 97-100% VAPOR QUALITY AND BUCKET TRAP TO BE INSTALLED AT UNIT BY CUSTOMER.
 - 6) ENSURE A 2" MINIMUM AIR GAP BETWEEN DISCHARGE AND FLOOR DRAIN.
 - 7) EACH LINE ITEM ABOVE IS REQUIRED AS SEPARATE CIRCUITS.
 - 8) R/H DOOR TRAVEL SHOWN . L/H DOOR TRAVEL MIRROR IMAGE



THIS DOCUMENT CONTAINS INFORMATION DEEMED CONFIDENTIAL AND PROPRIETARY TO R-V INDUSTRIES, INC. CENTRAL ENGINEERING & UTILITIES SERVICES AND MAY NOT BE REPRODUCED IN WHOLE OR IN PART WITHOUT THE EXPRESS WRITTEN PERMISSION OF R-V INDUSTRIES, INC. CENTRAL ENGINEERING & UTILITIES SERVICES. FURTHER NO USE OF THIS DOCUMENT OR THE INFORMATION CONTAINED HEREON MAY BE MADE WITHOUT FIRST SECURING THE PRIOR WRITTEN APPROVAL OF R-V INDUSTRIES, INC. CENTRAL ENGINEERING & UTILITIES SERVICES.

MACHINE TOLERANCES UNLESS OTHERWISE SPECIFIED

X.	±1/32
X.X	±.020
X.XX	±.010
X.XXX	±.005
FRACTIONAL DIM ± 1/32	
ANGLES ± 30 MIN	

FABRICATION TOLERANCES

0" TO 36"	±1/16"
36" TO 120"	±1/8"
> 120"	±3/16"

BREAK ALL SHARP EDGES

1	8/30/07	ZAS	REVISED PER RED MARK UPS	DG
0	5/9/07	ZAS	INITIAL RELEASE	
REV	DATE	DRAWN BY	REVISION	CHK APP

DESCRIPTION: 61 X 86 X 86

CUSTOMER: _____
 CUST. ORD. NO. _____
 CUST. REF. DWG. _____
 ITEM NO. _____

R-V Industries Inc.
 584 POPLAR RD.
 HONEY BROOK, PA 19344
 610-273-2457
 FAX 610-273-2438

SCALE: NONE DATE: 5/9/07 DWG. NO. B-88-19240 Sheet 1/1