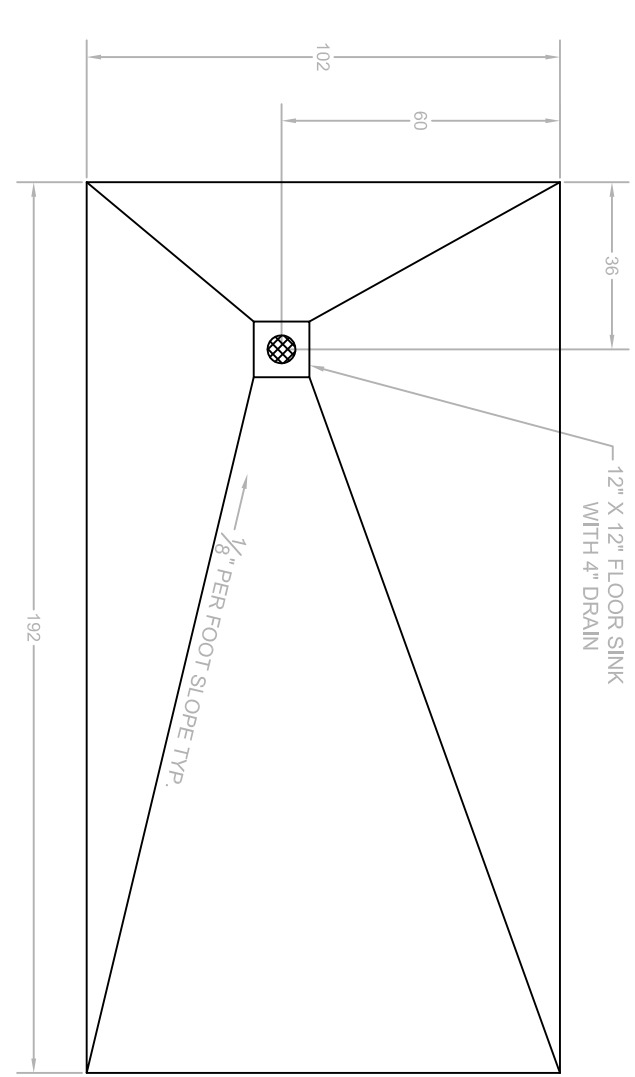
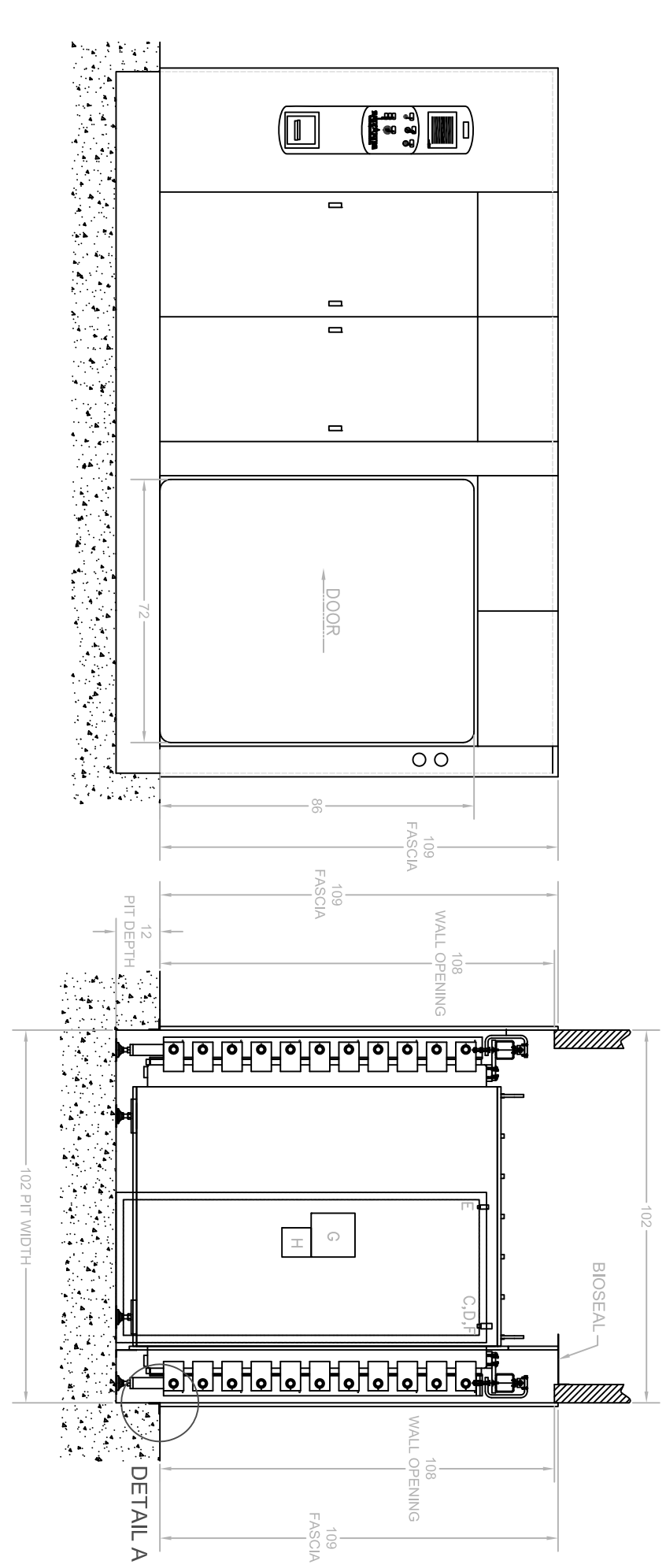
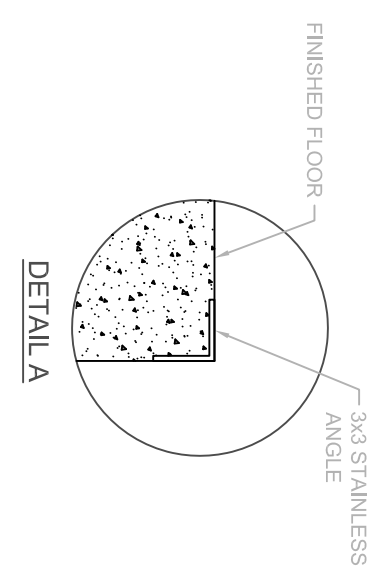
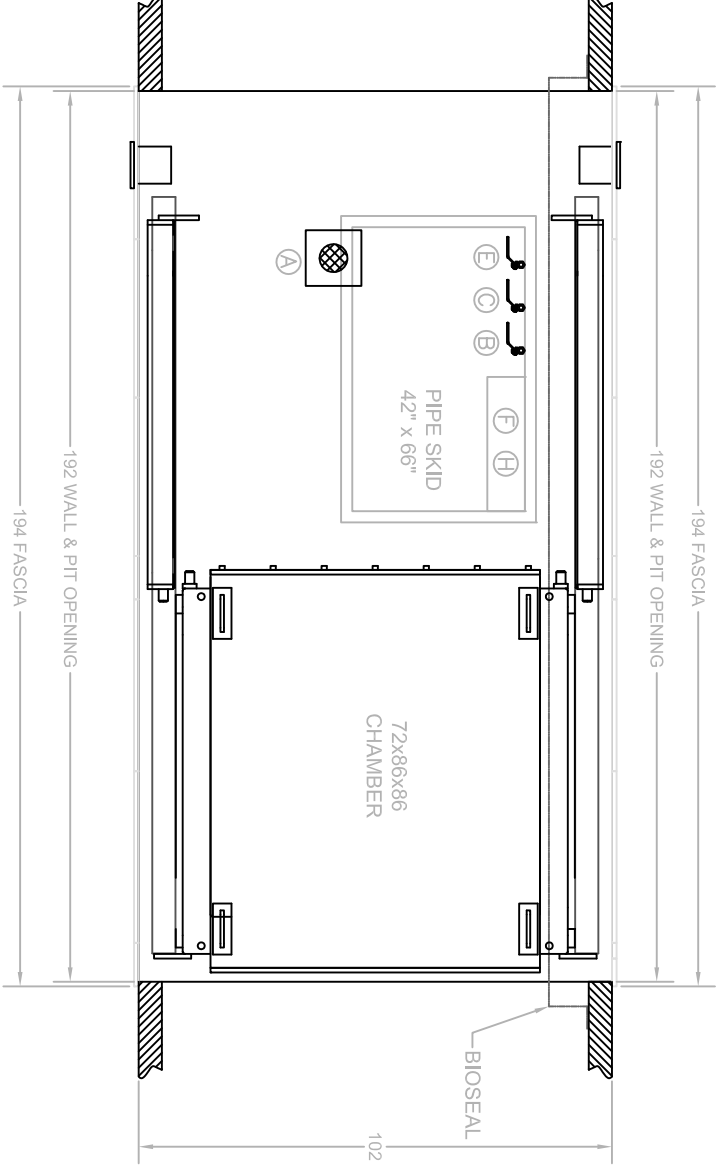


UTILITY REQUIREMENTS AND SPECIFICATIONS

BETA STAR MODEL	STEAM (LB/HR) 60-80 PSIG	HIGH VACCUUM (GMP) 20-50 PSIG	COMPRESSED AIR (SCFM) 80-100 PSIG	DRAIN SIZE (INCHES)	VOLTAGE	PHASE	FREQUENCY	AMP DRAW	EXT. WALL BOX WITH SWITCH	DISCON. SIZE	DISCON. FUSE SIZE	AMP DRAW	DISCON. SIZE	DISCON. FUSE SIZE	AMP DRAW	DISCON. SIZE	DISCON. FUSE SIZE	VACCUUM SYSTEM
72 X 86 X 86	2 1/2	3400	975	1/2	110	SINGLE	60-Hz	5		15 (AMP)	32.2	60	50	14	30	20		208V/3PH/60Hz 480V/3PH/60Hz



- NOTES:
- 1) UTILITIES SHOWN REQUIRE TIGHT SHUT OFF VALVE ACCESSABLE AT MACHINE FOR SERVICE.
 - 2) FOR LONG WATER OR STEAM RUNS INCREASE ONE PIPE SIZE TO INSURE PROPER GALLONS/HR & LB/HR FOR OPTIMUM EQUIPMENT PERFORMANCE.
 - 3) 18" CLEARANCES ON SIDES ARE MINIMAL FOR INSTALLING & SERVICING.
 - 4) ALL UTILITIES MUST BE WITHIN 5 LINEAR FEET OF CONNECTION POINT OF STERILIZER.
 - 5) STEAM TO BE 97-100% VAPOR QUALITY AND BUCKET TRAP TO BE INSTALLED AT UNIT BY CUSTOMER.
 - 6) ENSURE A 2" MINIMUM AIR GAP BETWEEN DISCHARGE AND FLOOR DRAIN.
 - 7) EACH LINE ITEM ABOVE IS REQUIRED AS SEPARATE CIRCUITS.
 - 8) L/H DOOR TRAVEL SHOWN. R/H DOOR TRAVEL MIRROR IMAGE

REV	DATE	DRAWN BY	REVISION	CHK	APP
2	11/20/08	ZAS	REVISED DRAWING FOR UTILITY CHANGES	RH	
1	8/30/07	ZAS	REVISED DRAWING PER MARK UPS	DG	
0	5/9/07	ZAS	INITIAL RELEASE		

MACHINE TOLERANCES UNLESS OTHERWISE SPECIFIED

X.	±1/32
X.X	±.020
X.XX	±.010
X.XXX	±.005

FRACTIONAL DIM ± 1/32 ANGLES ± 30 MIN

FABRICATION TOLERANCES

0" TO 36"	±1/16"
36" TO 120"	±1/8"
> 120"	±3/16"

BREAK ALL SHARP EDGES

DESCRIPTION: 72 X 86 X 86

CUSTOMER: _____

CUST. ORD. NO. _____ ITEM NO. _____

CUST. REF. DWG. _____

THIS DOCUMENT CONTAINS INFORMATION DEEMED CONFIDENTIAL AND PROPRIETARY TO R-V INDUSTRIES, INC. CENTRAL ENGINEERING & UTILITIES SERVICES AND MAY NOT BE REPRODUCED IN WHOLE OR IN PART WITHOUT THE EXPRESS WRITTEN PERMISSION OF R-V INDUSTRIES, INC. CENTRAL ENGINEERING & UTILITIES SERVICES. FURTHER NO USE OF THIS DOCUMENT OR THE INFORMATION CONTAINED HEREON MAY BE MADE WITHOUT FIRST SECURING THE PRIOR WRITTEN APPROVAL OF R-V INDUSTRIES, INC. CENTRAL ENGINEERING & UTILITIES SERVICES.

R-V Industries Inc.

584 POPLAR RD.
HONEY BROOK, PA 19344
610-273-2457
FAX 610-273-2438

Scale: NONE DATE: 5/9/07

DWG. NO. **B-88-19241**

Sheet 1/1