

Animal Laboratory, and Vivarium Autoclaves



Reliability and Continuous Workflow!

Beta Star autoclaves are engineered to keep your facilities' workflow at its maximum. Rely on our precision fabrication and industrial-grade non-proprietary components to ensure the reliability and longevity of your autoclave.

Safety

Beta Star keeps your employees safe and your laboratory sterile by integrating critical safety features in the steam sterilization process.

Control system safety features include: Multi-level user security, continuous jacket, chamber, and drain temperature monitoring. An audible condition alarm is affirmed and documented if a cycle is outside of a parameter.

Door safety features include door obstruction stop, door cycle locks and interlocks, pneumatic switch overrides, door seal monitor prior to chamber pressurization, power loss lock, and controlled chamber depressurization in the event of extended power interruption.

Controls

The intuitive color touch screen interface includes user and supervisor level security, 30 programmable cycle configurations, simple menu selections and cycle status. The six inch color touch screen displays all pertinent cycle values, including cycle times, temperature, pressure, and set points. Maintenance diagnostics and system status is standard in every control.

Construction

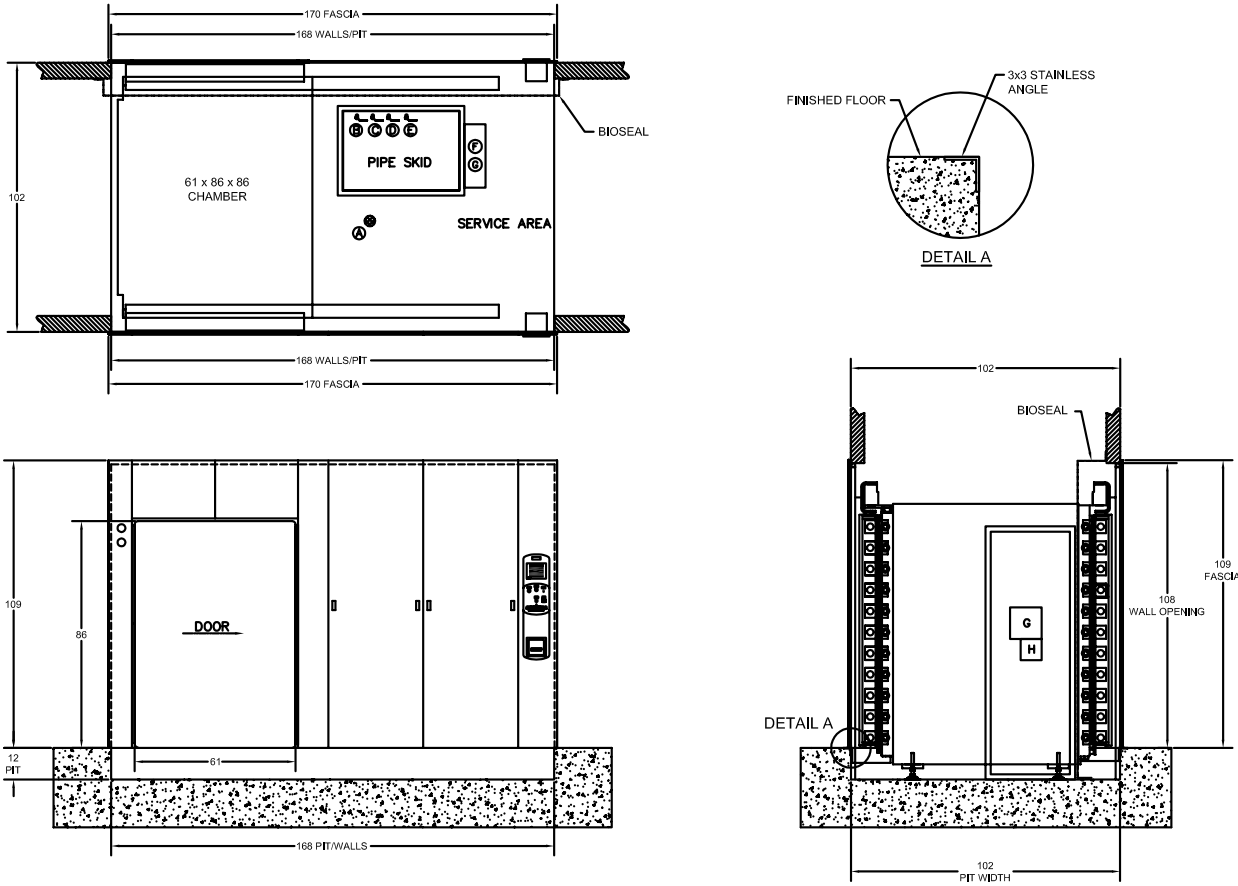
All Beta Star autoclave chambers are ASME section VIII, pressure vessel rated, and constructed from 316L stainless steel. A rigid stainless steel track is used for the automatic horizontal sliding doors. The frame is made of 304 stainless steel, and used for mounting the industrial grade process components. Our larger autoclaves can be fabricated for floor or pit mounted applications.



Animal Laboratory and Vivarium Autoclaves



Model Size 61x86x86 Shown



Sizing

Beta Star autoclaves are available in a variety of sizes to meet your process needs. Sizes are selected based on throughput, facility size, or existing equipment including equipment carts and isolated or ventilated cage systems.

See the chart below for a list of our standard sized autoclaves. Custom sizes are available upon request. Beta Star's sectioned autoclave chambers are assembled on-site, where building access is limited in space.

Model	Chamber Size in Inches			Steam LB/HR	Drain	Vac-Pump	Control	Weight LB
	Width	Height	Length					
VR 263660	26	36	60	250	3"	208/480v 3 Ph	110v	4,600
VR 355749	35	57	49	450	4"	208/480v 3 Ph	110v	5,200
VR 355760	35	57	60	530	4"	208/480v 3 Ph	110v	6,200
VR 355786	35	57	86	710	4"	208/480v 3 Ph	110v	8,500
VR 495786	49	57	86	950	4"	208/480v 3 Ph	110v	10,500
VR 368686	36	86	86	1100	4"	208/480v 3 Ph	110v	11,500
VR 498686	49	86	86	1500	4"	208/480v 3 Ph	110v	12,000
VR 618686	61	86	86	1700	4"	208/480v 3 Ph	110v	18,000
VR 728686	72	86	86	2100	4"	208/480v 3 Ph	110v	21,000