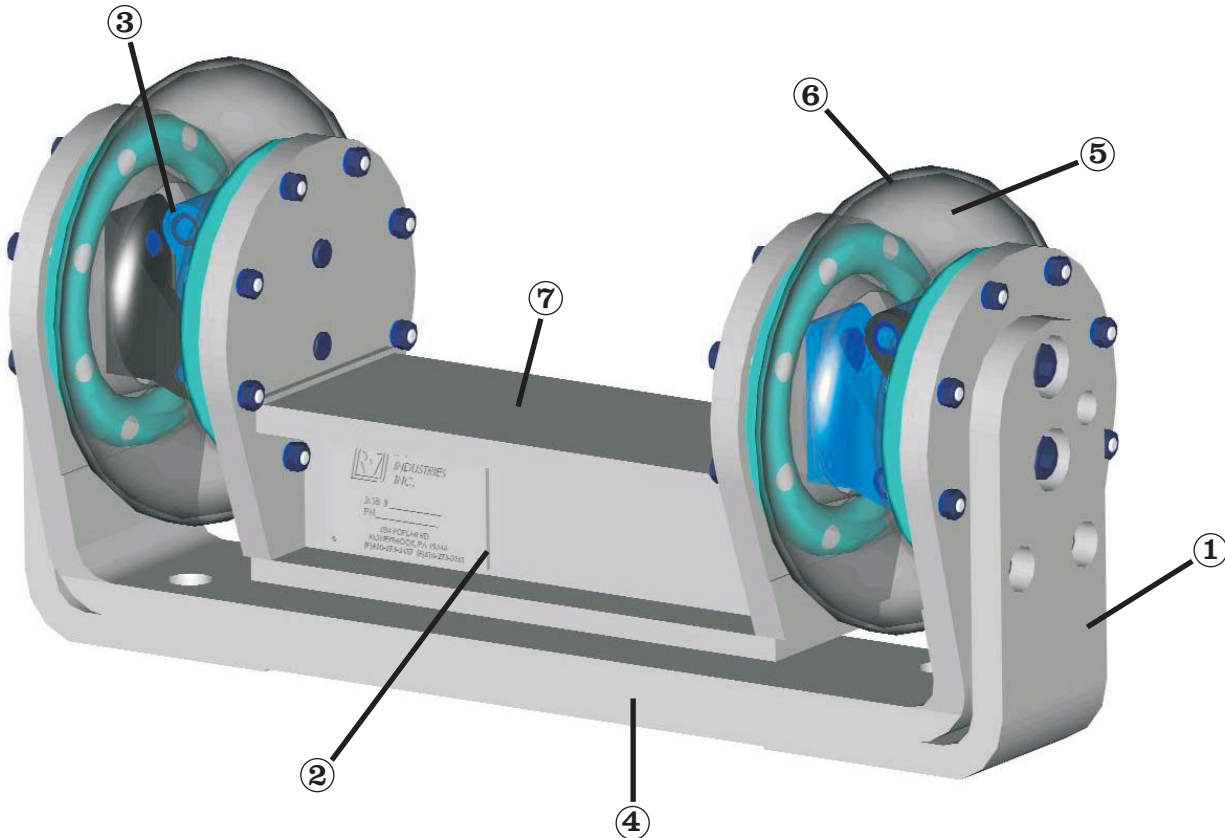


Automatic Guides

R-V Industries' Automatic Fabric Guides provide the fabric tracking control to fit your specific application. Crafted with the highest quality stainless steel, choose from three size models: 120, 200 or 300.



Features

1. Guide frame fabricated from corrosion-resistant stainless steel, 316L grade.
2. Guide saddle fabricated from corrosion-resistant stainless steel, 316L grade.
3. Needle bearing slide pivots with hardened shafts for long lasting reliability.
4. Guide mounts in any direction.
5. Rubber bellows to control guide housing position. Maximum operating temperature 225 degrees Fahrenheit.
6. All moving components are protected by the rubber bellows to prevent damage.
7. Two options for mounting of roll bearing, pillow block and cartridge type.

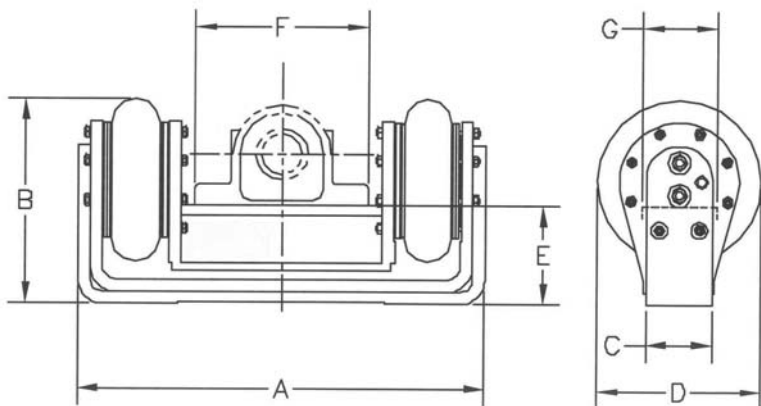
Automatic Guides

Selection Criteria

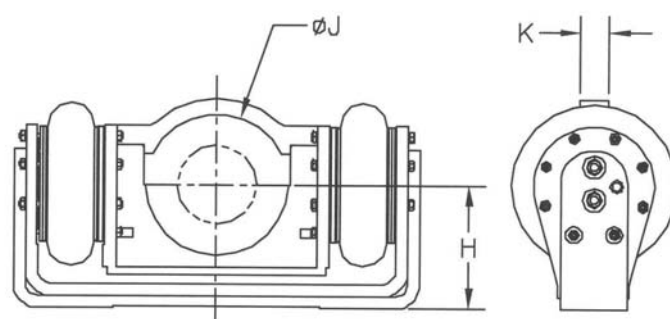
To select your model specifications determine the following:

- ✓ Roll face width
- ✓ Type of bearing – pillow block or cartridge unit
 - ✓ If pillow block, size of bearing foot
 - ✓ If cartridge unit, diameter of bearing housing

Pillow Block Roll Mounting



Cartridge Unit Roll Mounting



Specifications

	Spec. A	Spec. B	Spec. C	Spec. D	Spec. E	Spec. F	Spec. G	Spec. H	Spec. J Max. Min.	Spec. K	Max. Vert. Load Pounds	Guide Roll Face
Model 120	24.50	12.69	4.00	10.10	5.94	11.75	5.00	7.44	5.25 8.75	2.00	5,000	0 - 120
Model 200	26.00	15.62	5.50	12.90	7.75	13.25	5.00	9.25	7.25 10.25	3.00	5,000	121 - 200
Model 300	31.25	18.81	6.50	15.90	9.81	16.00	6.00	11.31	12.00 9.00	3.50	9,000	201 - 300

* Accessory packages available with purchase of guide. Packages include guide controller, flat or rotary palm, mounting stand, filter/regulator and failsafe valve.

* Maintenance kits also available.



180 Waterworks Road, Coatesville, PA 19320
 (P) 610.384.3100 (F) 610.384.9281
 E-mail: sales@rvii.com
 www.rvii.com