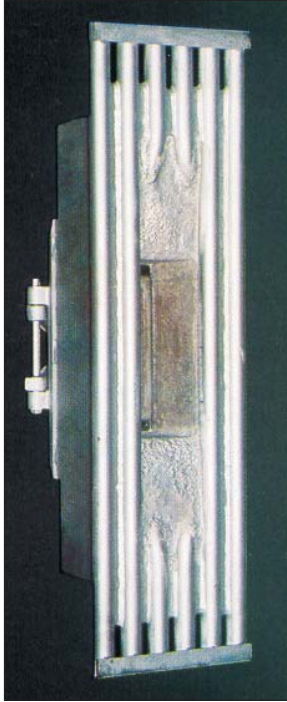


Observation Doors

R-V's 4" x 10" door is a direct bolt on replacement for your original equipment door. A 6" x 12" size is also available.



4" x 10" Door with Tube Panel and Seal Box.

Complete door and frame assemblies are in stock and available with a left or right hand opening option. Refractory lined stainless steel retainers are available to maintain your existing doors.



4" x 10" Door

Other Available Observation Doors



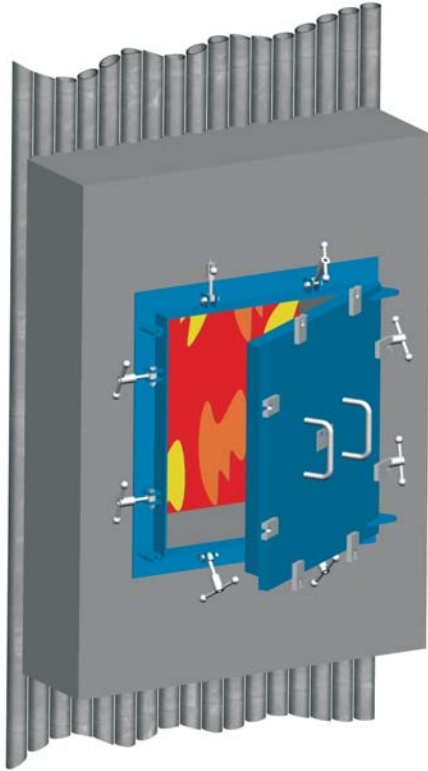
6" Diameter Observation Door for pressurized furnaces complete with aspirating air valve.



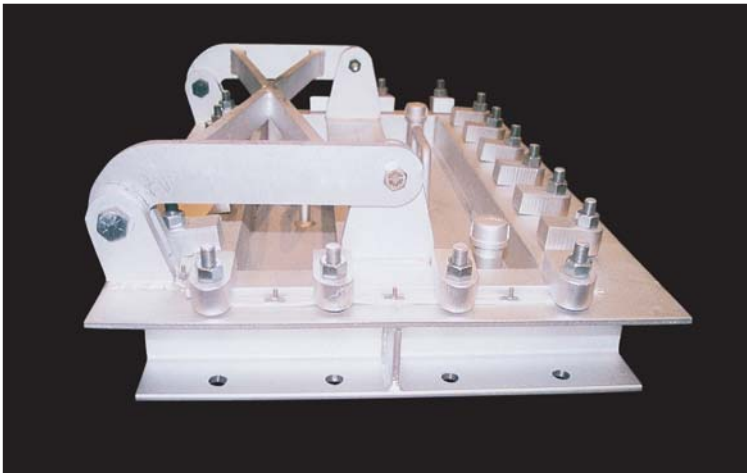
5 1/2" Round Door for balanced draft furnaces.

Access Doors

R-V offers a variety of access door sizes and styles. All are available with optional seal box and tube panel for new furnace door locations.



Our **Hinged Access Doors** are designed for left or right hand openings. Standard sizes include 18" x 18", 18" x 24", 24" x 24", 24" x 48", 18" x 40" and 18" x 54". Custom sizes are also available.



Water-Cooled Access Doors are available for high temperature applications. Our standard sizes are 18" x 38" and 32" x 55". Custom sizes are also available.



Our **15" x 21" Cast Elliptical Door** is a direct replacement for your original equipment door.