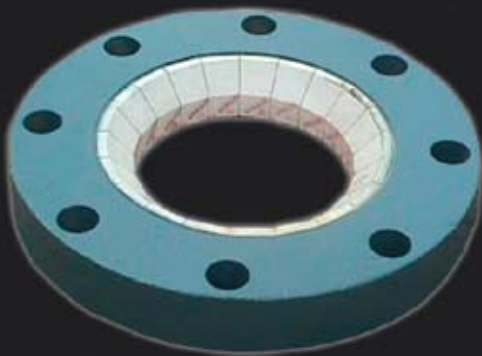
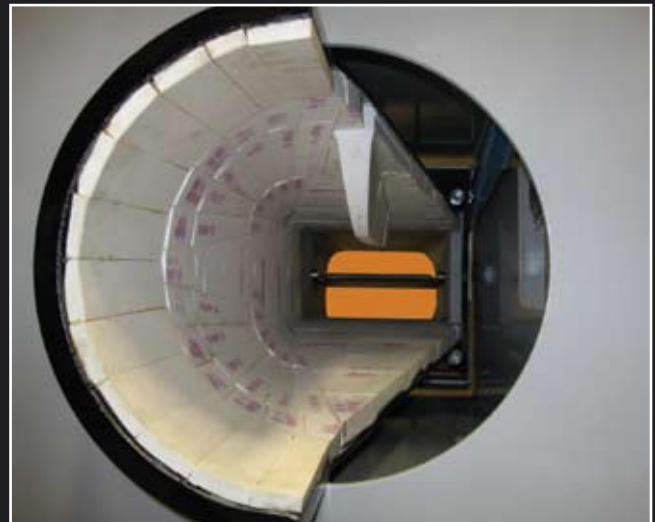


# Ceramic-Lined Components



R-V Industries, Inc. manufactured the first pre-engineered ceramic-lined stationary coal nozzle for the United States utility industry in 1984. For the past 25 years, our ceramic lined components have provided increased durability. Today, the longevity of certain R-V components may increase component life as much as four times.

This design is available with 1/2" or 1" thick ceramic tile. The end tip can be furnished, cast, or fabricated in a variety of different materials.



CER Orifice

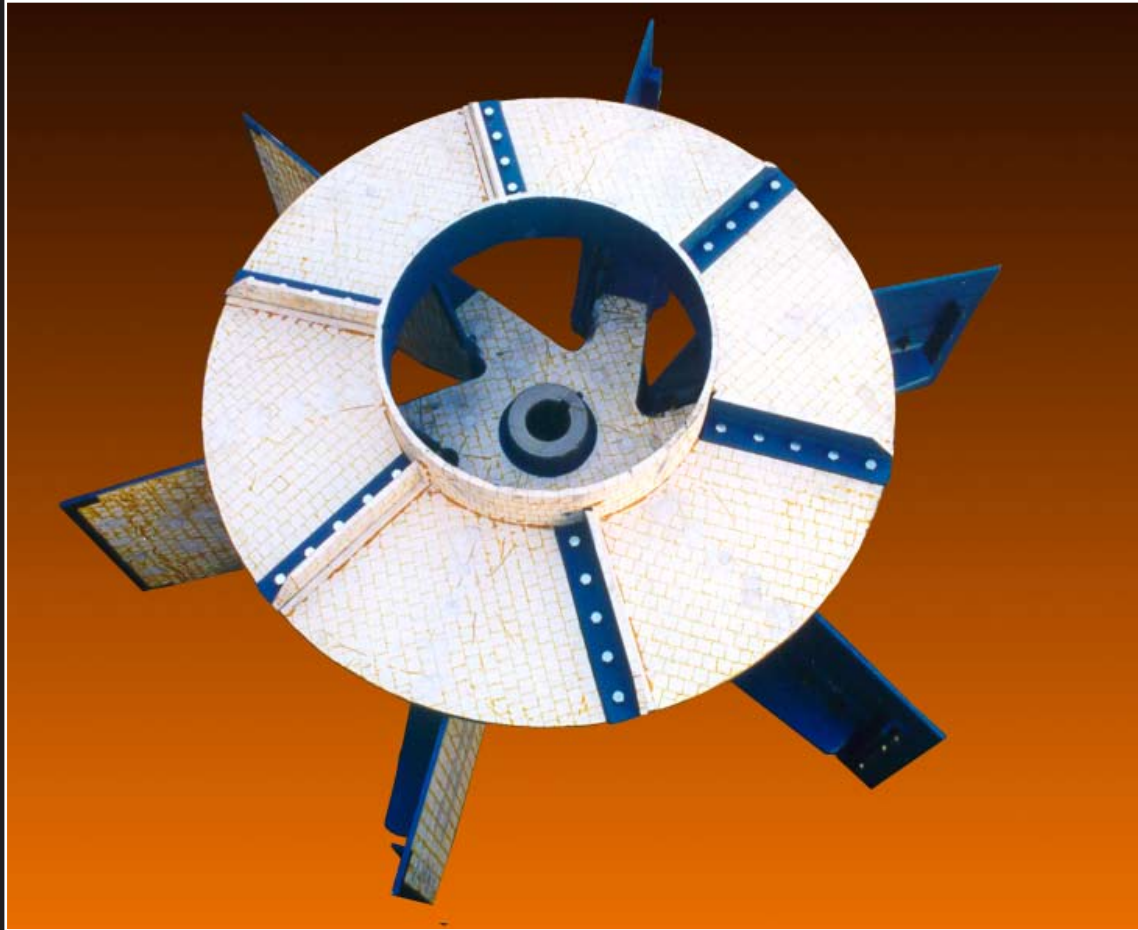
Many other ceramic-lined components such as coal-lined orifices, mill cones, classifiers, convertor heads and exhaustor inlet elbows are available.

Complete ceramic-lined whizzer wheel assemblies are also available. Please see reverse side for details.



## Whizzer Wheel Assemblies

---



R-V's ceramic whizzer wheel assembly highlights an aggressive ceramic design. Vacuum bonded blades are furnished in ceramic or combined with tungsten carbide tips as shown above. Our fan spider has a unique one-piece ceramic-lined replaceable liner. The assembly is complete with ceramic whizzer blades and a ceramic whizzer disc. Your individual design preferences may be incorporate into any of R-V's whizzer wheel assemblies.

R-V has manufactured fan spiders, whizzer discs, fan blades, and complete whizer wheel assemblies since 1981. We also offer individual ceramic-lined components or complete assemblies static balanced and ready for installation.