

Riffle Elements



With three design choices, R-V Industries' Riffle Elements provide the custom quality you have come to rely on. Choose from the original equipment, R-V's mid cut, or coarse cut models to best suit your boiler's needs.

Original Equipment

- Made to original equipment specifications
- Smallest openings of the three designs

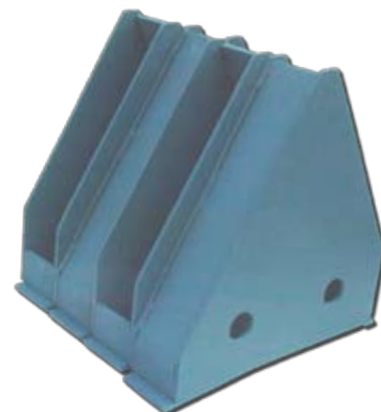


R-V Mid-Cut

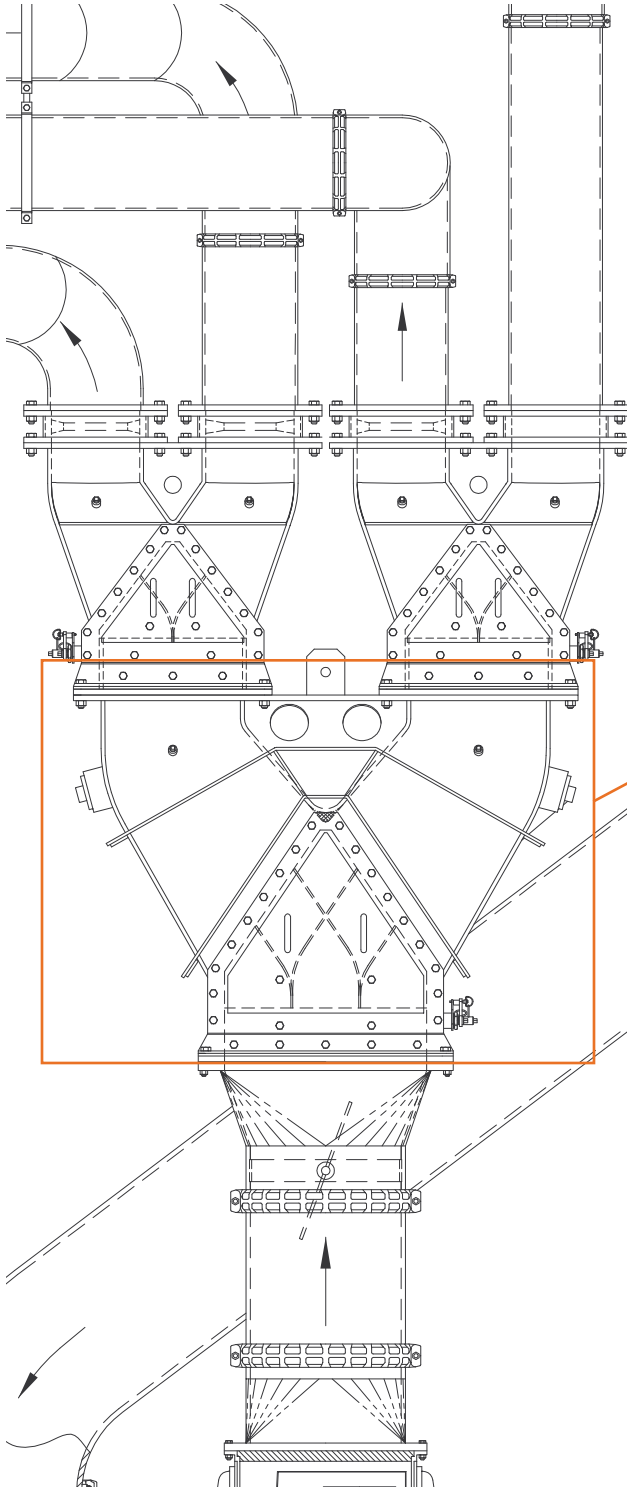
- Assembled design with mid-sized openings
- Thicker material but lightest total weight of the three designs
- Lowest cost of the three designs
- Increased air flow
- Material options include carbon steel, AR400 and AR500

Coarse Cut

- Sectional design provides easier handling
- Thicker material but lighter overall weight than original equipment design
- Widest opening size of the three designs
- Lower cost than the original equipment design
- Increased air flow possible compared to other sizes
- Material options include carbon steel, AR400 and AR500



Riffle Elements



R-V's Riffle Elements are made to fit all existing primary, secondary, and tertiary housing sizes.

